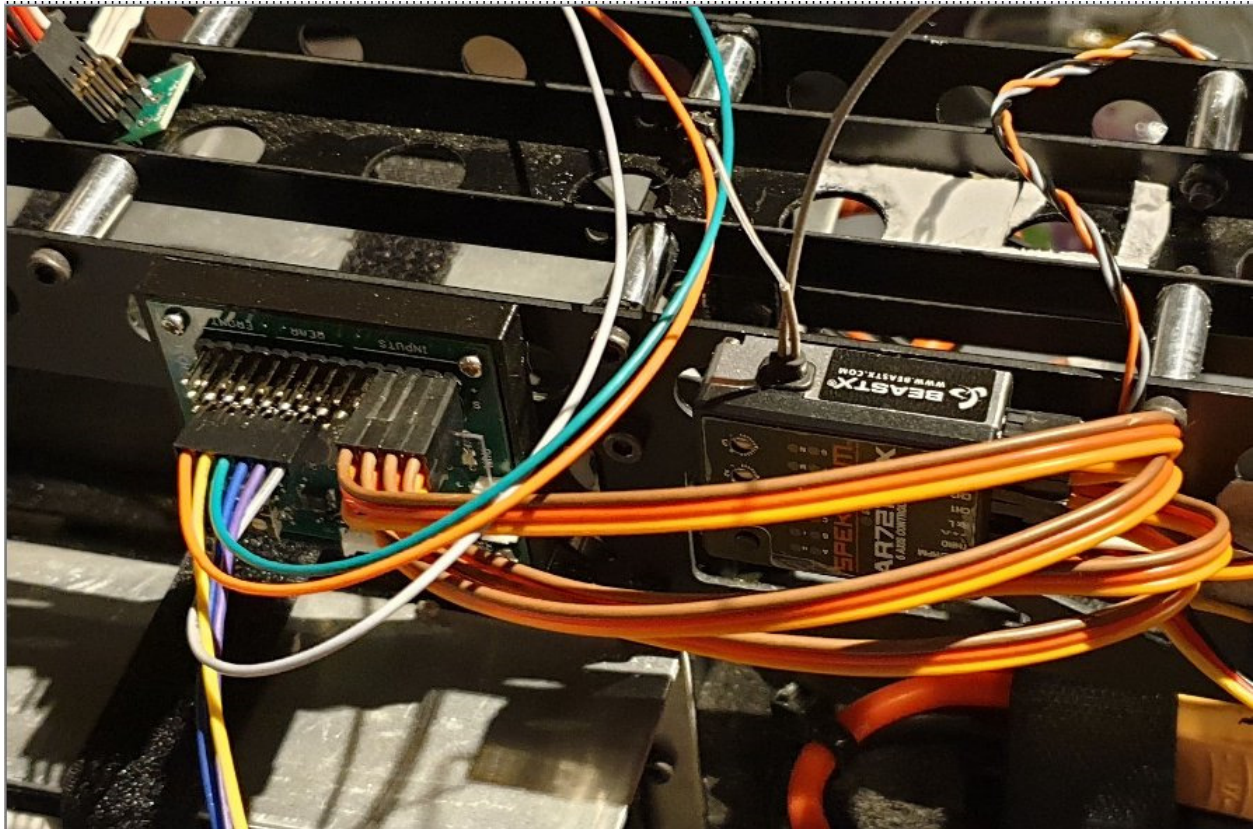


Using the TH-2 XPR with BeastX FBL Controller



Mark from memflight.co.uk was kind enough to share his efforts adding a FBL controller to a Hirobo CH47. He used a BEASTX fbl controller connected to our TH-2 XPR tandem mixer.

The outputs of the BEASTX connect directly to the inputs of the TH-2 XPR. The servos are driven by the TH-2 via extender boards which supply power to the servos. The BEASTX is configured for mechanical mixing so all of the mixing is done by the TH-2.

DCP is fed from the elevator channel in this case which is an option with the TH-2 setup. Another choice would be to use CH5 directly from the Rx as the DCP input to the TH-2. This would require an additional gyro for the DCP function and provide a more flexible setup with adjustments done in the Tx.

Here is what Mark said about the setup:

"With regards to the DCP, I just left it all as default with the built in mixing amount (25% I think from memory?). So I've not got any custom adjustment from the transmitter. The default values seemed fine.

All I changed in the TH2 was the swashplate orientation, some servo reversing, and then put all the gains to 100% to setup the BeastX for 6 degrees of blade movement. I then reduced them all back to 50% apart from the pitch which I left at 100% as the BeastX controls the Min/Max collective values.

It flew really nicely, no odd behaviors despite the slightly gusty wind."

Link to test flight video <https://youtu.be/skoRslrLF4>

